



860 W Long Lake Rd

860 W Long Lake Rd, Bloomfield Hills, MI 48302

Mark Vestevich

Mark V Investments

800 W Long Lake Rd, Bloomfield Hills, MI 48302

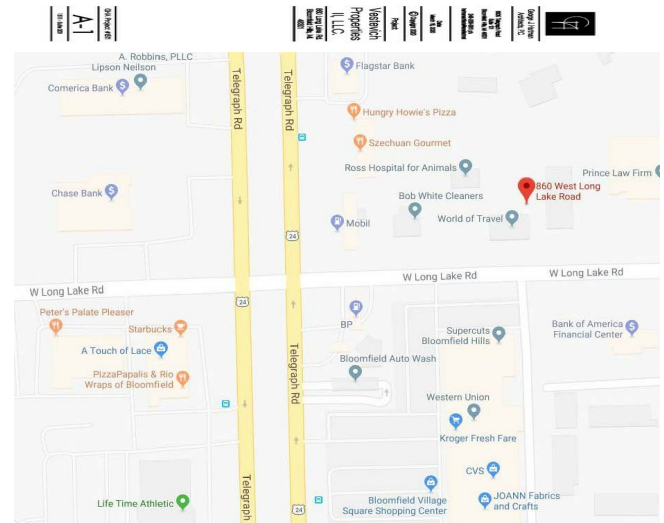
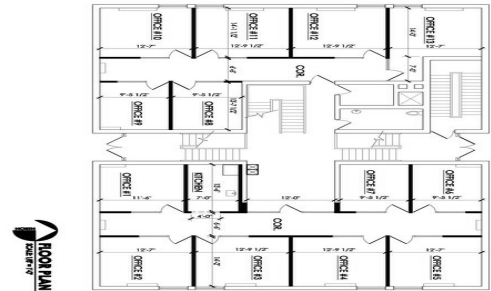
mv@mvinvestments.com

(248) 646-8440

860 W Long Lake Rd

\$20.00 /SF/YR

Conveniently-located 13,500 square foot, well-built, three-story brick office building in Bloomfield Hills. All leases true gross, including suite electricity. Brand-new suites available! Renovation of common areas currently under way. Easy walk-out to parking. Property manager nearby. Located on Long Lake Road, just east of Telegraph Road. Signage rights available! Zoned for office, business....



Rental Rate: \$20.00 /SF/YR

Property Type: Office

Property Subtype: Office

Building Class: C

Rentable Building Area: 14,000 SF

Year Built: 1966

Walk Score ®: 54 (Somewhat Walkable)

Rental Rate Mo: \$1.67 /SF/MO

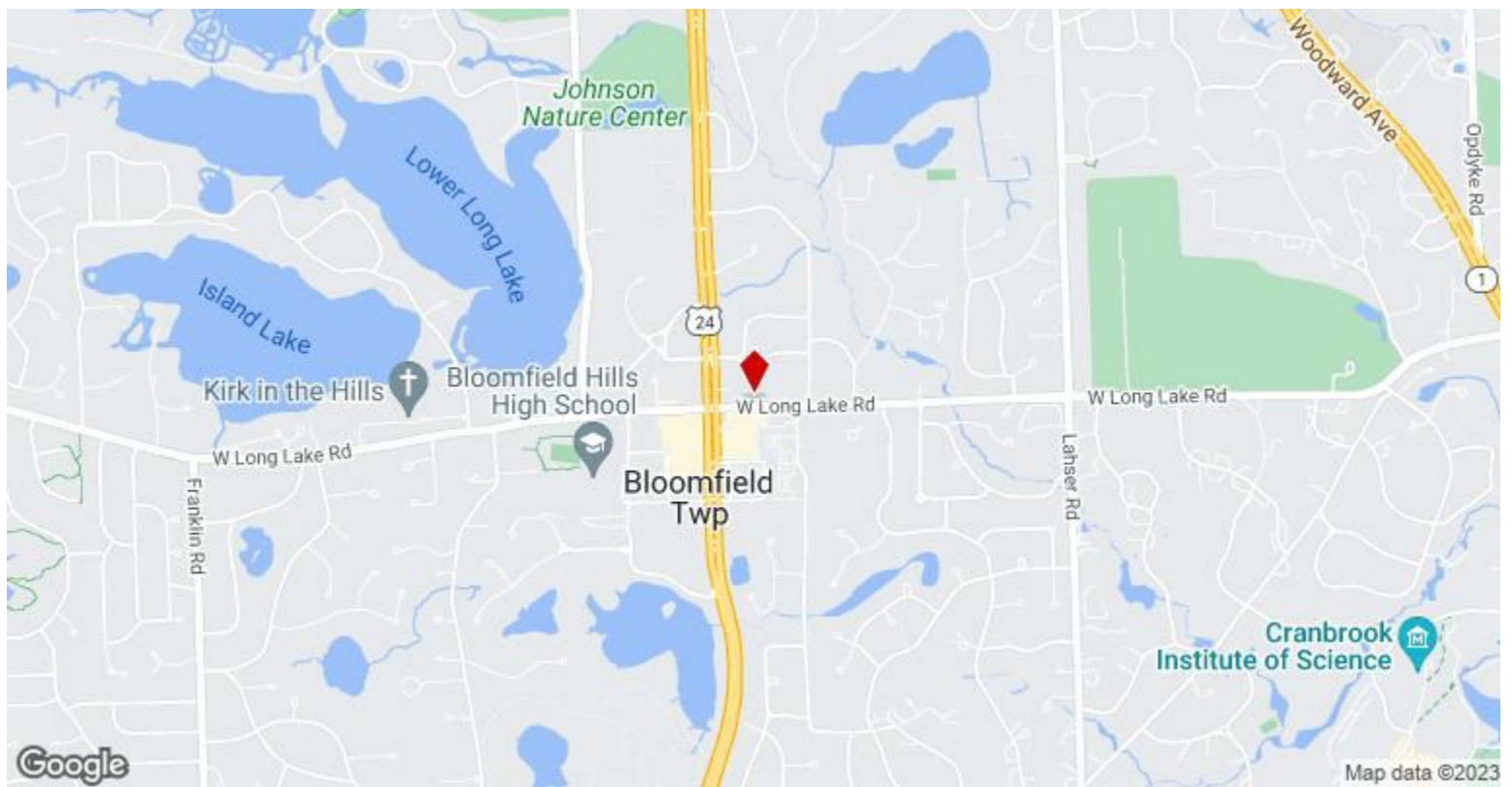
1st Floor Ste 150

Space Available	972 SF
Rental Rate	\$20.00 /SF/YR
Date Available	60 Days
Service Type	Full Service
Space Type	Relet
Space Use	Office
Lease Term	Negotiable

Send All Inquiries To Mark Vestevich

Major Tenant Information

Tenant	SF Occupied	Lease Expired
Carc Design Group	-	
The World Of Travel	4,666	November 2007
Walsh & Co	3,498	October 2007



860 W Long Lake Rd, Bloomfield Hills, MI 48302

Conveniently-located 13,500 square foot, well-built, three-story brick office building in Bloomfield Hills. All leases true gross, including suite electricity. Brand-new suites available! Renovation of common areas currently under way. Easy walk-out to parking. Property manager nearby. Located on Long Lake Road, just east of Telegraph Road. Signage rights available! Zoned for office, business.